

ZEF Energy

DIY Branding Wrap Template
ZEF Energy | ABB Terra Series
V 1.0_2021

FRONT PANEL TEMPLATE

MANDATORY REQUIREMENTS:

1. All vector graphics -- No BITMAPS
2. 1/2" bleed beyond cutlines on all sides, except 1" bleed on top and bottom edges
3. Spot Red used for bleed lines (0.5" thickness)
4. Spot Magenta (100% M) used for "CUTCONTOUR" line
5. CMYK color for all embedded art and the final file
6. All fonts should be vectorized ("create outline")
7. Final design file to be provided as an Illustrator (AI), PDF or ESP file.
8. Any fonts that are not outlined or any linked images that are not embedded need to be packaged or sent with the final artwork files provided.

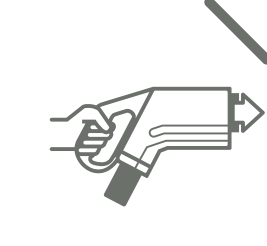
Application: This equipment wrap will be installed in the field with all internal cutlines cut in the field to allow for the best fit.

INSTRUCTION AREA: This is optional text and graphics that can be included with your custom design.

This is the default color for the text, icons, and boxes in the Instruction Area [Spot Gray, 85% black]. A high-contrast custom color can be used instead. This color may only be white if the background area is true (registration) black or Spot Gray (85% black).

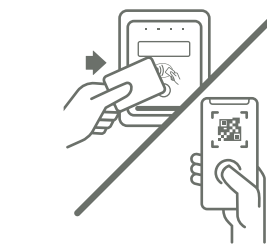
REQUIRED: This artwork element is required for driver support instructions. This area can not be altered or hidden, and the background color cannot be altered.

1



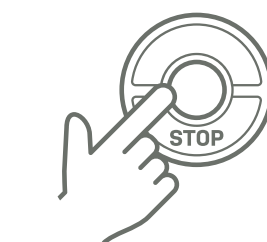
Plug in your vehicle

2



Swipe/tap your credit card or **access charger via mobile app**

3



To end a charge, press the **STOP button** on the screen

Center & Adhere
Charger ID Sticker here
(sticker is larger than this white box)

To pay by app or get charging tips, open the ZEFNET CHARGE mobile app. Use the QR code to open the app and identify the charger once in the app.

For driver support, call 1-888-4ZEFNET

